
ADAPT-WAP Project

Integration of climate change adaptation measures in the concerted management of the WAP transboundary complex (W-Arly-Pendjari)

Benin, Burkina Faso, Niger



PROJECT INCEPTION WORKSHOP

Remote meeting - April 21, 2020

| FINAL VERSION |



Table of contents

- 1- INTRODUCTION 3
- 2- ADAPT-WAP PROJECT 4
- 3- INCEPTION WORKSHOP OVERVIEW 5
 - 3.1. Opening and Welcoming remarks..... 6
 - 3.2. Presentation Sessions 6
 - 3.2.1. The ADAPT-WAP Project and priority activities for 2020..... 6
 - 3.2.2. Methodology for establishing the project baselines..... 7
 - 3.2.3. Drafted ToRs for the development of the Multi-Risk Early Warning System 8
 - 3.2.4. Introduction to the project financial and technical reporting..... 8
 - 3.2.5. Project implementing progress..... 8
 - 3.2.6. Conditions for entry into force of the grant agreements..... 9
- 4- DISCUSSIONS AND RECOMMENDATIONS 9
- 5- CONCLUSION10

1- INTRODUCTION

The Sahara and Sahel Observatory (OSS) has received funding from the Adaptation Fund for implementing the regional project entitled “Integration of climate change adaptation measures in the concerted management of the WAP transboundary complex: ADAPT-WAP Project”, designed in consultation with the three beneficiary countries of Benin, Burkina Faso, and Niger. This regional project is funded up to 11,500 KUS\$, for four years, to finance components aimed to strengthen the resilience of ecosystems and improve conditions of life of populations by strengthening their capacities through participatory processes and empowerment. The project will develop a multi-hazard early warning system which is an essential element of climate risk management frameworks.

The Inception Workshop of the ADAPT-WAP project – “Integration of climate change adaptation measures in the concerted management of the WAP transboundary complex – took place on 21 April 2020 **in video conferencing**, due to the COVID-19 pandemic. It was organized and chaired by OSS - the Sahara and Sahel Observatory, and all the 4 beneficiaries’ countries were represented. Almost 50 participants attended the videoconference. The Agenda and detailed list of Participants are annexed (Annex 1 and Annex 2 accordingly).

This report is a deliverable related to the Reporting of milestones according to the Adaptation Fund requirements. The workshop marks the start date of the four-year Project (2020-2024).

A particular message to concerned countries and relevant partners was to display pro-active involvement, to express needs, and to build on co-ownership with a common view to reinforcing actions made in the targeted area despite the challenges it faces.

During the Inception workshop, all management aspects of the project were presented to beneficiaries and partners. Brief discussions on the implementation of national and regional activities were made with an emphasis on Year 1.

The major forthcoming activities and events are:

- The first steering committee meeting that will take place on 22 April 2020, in video conferencing;
- The initiation of activities planned for Year 1, namely the design of the MREWS adapted to the status analysis results;
- A Communication and Dissemination Strategy dedicated to the project outputs and awareness raising;

2- ADAPT-WAP PROJECT

The W-Arly-Pendjari trans-boundary complex consists mainly of 5 parks shared by three countries namely Benin, Burkina Faso, and Niger. This complex has been classified as UNESCO World Natural Heritage since July 2017 and considered to be one of the largest and most important continuums of unhurt terrestrial, semi-aquatic and aquatic ecosystems of the West African savannah belt.

The complex is subject to multiple pressures and threats which persist, such as poaching, illegal grazing and encroachment of agricultural land, conflicts over the use of resources, uncontrolled transhumance, bush fires, pollution of surface water, unsustainable fishing in addition to climate change and variability which impact the sustainability and balance of ecosystems and natural resources.

The **ADAPT-WAP**¹ project is a sub-regional project with a focus on strengthening the resilience of ecosystems and improving the livelihoods of populations within the WAP (W-Arly-Pendjari) complex to address threats linked to the climate change issue by the establishment of a multi-risk early warning system and the implementation of concrete adaptation measures.

The project will focus on the following issues:

- Droughts leading to uncontrolled movement of pastoralists,
- Floods threatening the safety of populations and plains by the loss of crops,
- Uncontrolled bushfires leading to the shrinking of forest areas and caused by both human and natural factors,
- Expansion of agricultural lands increasing pressure on natural resources and inducing loss of ecosystem services as carbon sequestration.

The project-specific objectives are:

1. Improve Strategic reference documents, i.e. development and management plans, by integrating the climate change issues.
2. Increase the resilience of populations through an Early Warning System and providing relevant and timely information on the occurrence of extreme weather events in the WAP Complex and its adjacent areas.
3. Improve the resilience of ecosystems (fauna and flora) and populations' livelihoods through the development of infrastructure, (transhumance corridors, drinking troughs, and anti-flood structures...),
4. Ensure the sustainability of adaptation measures through mobilization and sensitization of beneficiaries and partners to master the tools developed and to execute the planned activities.

THE PROJECT:

Intervention areas: Benin, Burkina Faso and Niger
Complex of the W parks (which covers Benin, Burkina Faso and Niger) and the complex consisting of Arly National Park (Burkina Faso) and Pendjari National Park (Benin)

Sectors: Early Warning, Food security, Disaster risk reduction

Implementing Entity: Sahara and Sahel Observatory

Execution Entities: Regional Coordination (OSS) and National Institutions:

- Center for Wildlife Reserve Management (Benin-CENAGREF)

- National Office of Protected Areas (Burkina Faso - OFINAP)

- General Directorate of Water and Forests (Niger-DGEF)

Duration of the action: 48 months

Budget: 11,536,200 \$US

Project funded by the Adaptation Fund

¹<https://www.adaptation-fund.org/project/integration-climate-change-adaptation-measures-concerted-management-wap-transboundary-complex-adapt-wap-benin-burkina-faso-niger/>

To achieve the objectives of the ADAPT-WAP Project, and based on ecosystems and populations vulnerability analysis and the related threats burdensome identified, the intervention has been organized into **four (04)** components.

Each component will adopt an integrated and participatory approach encompassing institutional, social, economic, and environmental aspects to ensure the improvement of the livelihoods of the riparian populations to the complex WAP and the increase of natural ecosystems resilience, currently located under the threat of climate change and natural disasters.

Component 1	Component 2	Component 3	Component 4
<ul style="list-style-type: none"> • Integration of Climate Change Aspects (MREWS) into the management of WAP Complex 	<ul style="list-style-type: none"> • Design and implementation of a multi-risk early warning system (drought, floods, and fires) 	<ul style="list-style-type: none"> • Improving Resilience of ecosystems and the livelihoods of population and users through the implementation of concrete adaptation actions 	<ul style="list-style-type: none"> • Awareness, communication and capacity building for concerted, integrated and sustainable management of the WAP Complex

The project is implemented by the Sahara and Sahel Observatory (OSS) as a regional implementing entity to the Adaptation Fund. A Regional Project Execution Unit (rPMU), made up of a group of experts hosted by the OSS, runs the management of the project and coordinates its execution in close collaboration with the national project execution units (nPMUs) in the three beneficiary countries namely, the National Centre for the Management of Wildlife Reserves (Benin), the National Office of Protected Areas (Burkina Faso) and the General Directorate of Water and Forests (Niger).

3- INCEPTION WORKSHOP OVERVIEW

April 21, 2020, marked the launch of the ADAPT-WAP regional project via video conference in presence of representatives from national execution institutions, civil society, NDAs and partners. The main purpose of the workshop was to officially launch the project and to achieve a common understanding and adoption of the activities by the various national and regional stakeholders for which will serve a successful implementation of the project. It was also an opportunity to review the priority activities of the first year of the project action plan, namely for the regional level – Studies on Early Warning System and Geographic Information System; as well as to introduce requirements according to procedures and policies for project management and ensuring adequate monitoring and technical and financial reporting.



Initially planned in a face-to-face event in Niamey, on March 24-25, 2020, the regional ADAPT-WAP project launching workshop was finally organized remotely, to meet the deadlines of the Adaptation Fund and the measures taken by the countries to limit the COVID-19 related health risks. The OSS Executive Secretary and experts, the focal points of the Adaptation Fund, technical and financial partners, national partners at central and local levels, representatives of non-governmental organizations, and local riparian communities took part in the videoconference (see list of participants - Annex 2).

The virtual meeting was moderated by Mr. Nabil BEN KHATRA, the OSS Environment Program Coordinator (see agenda – Annex 1).



3.1. Opening and Welcoming remarks

The workshop started at 10:00 am Tunis Time with a brief welcoming and introduction of agenda and participants by the Moderator of the workshop - Mr. Nabil BEN KHATRA (OSS).

Following this, the official opening speech was performed by Mr. Khatim KHERRAZ, Executive Secretary of the Sahara and Sahel Observatory (OSS), followed by speeches from the representatives of partner organizations, respectively, the Executive Director of the West African Savannah Foundation (WASF/FSOA) and the GIZ representative. They mainly highlighted the importance of the project for the three countries sharing the WAP complex and the need to sustain efforts made through similar projects and the way to work together to achieve common goals.



Also, Chief Executives of the project management structures at the national level reiterated their commitment and their willingness to support project activities and provide technical and administrative facilities.

3.2. Presentation Sessions

3.2.1. The ADAPT-WAP Project and priority activities for 2020

This session was dedicated to the presentation of the ADAPT-WAP project and the priority activities underway and to be implemented by the regional project management unit (rPMU). A brief overview followed related to main points to be presented during the workshop; the project implementation, entry into force procedures as well as the main lines of the periodic (technical and financial).

Mr. Louis Blanc TRAORE Regional Project Coordinator (rPMU) presented the project's objectives and components, the expected results, main activities and budget. Secondly, he reviewed the regional activities to be carried out during the first year, in particular the elaboration of 12 studies and the organization of planned meetings.



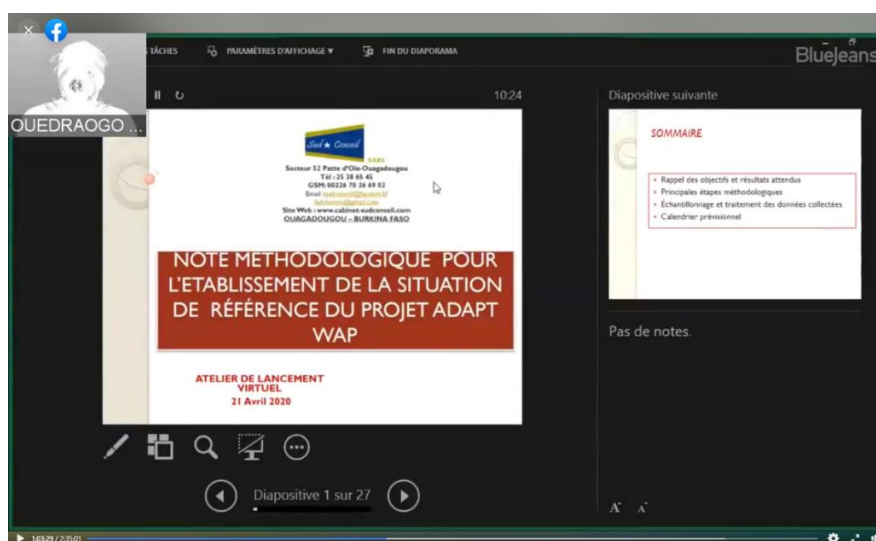
At the end of this presentation, discussions with attendance focused on the following main points:

- Strategy to adopt to deal with the current global health situation for successful project implementation; knowing that the activities planned for this first year will mainly focus on preparatory studies for field actions, the rPMU will conduct discussions with the national partners to adapt them to meet annual objectives.
- Issues of gold mining and other concerns surrounding the parks in particular in Niger were raised, as well as the request to integrate these threats into the project risk matrix and the tools to deal with them.
- Type of activities to be implemented at the national and regional level involving communities' intervention
- For better understanding, a common recommendation has been made to provide a French translated version of the project document to every project involved partner.

3.2.2. Methodology for establishing the project baselines

A special session was dedicated to introducing the Consulting Firm assigned to the mission of establishing the baseline for the project activities. This opportunity was the first meeting with the national partners, the firm director, Mr. Mohamed OUEDRAOGO presented the main methodological steps to conduct the study as well as the sampling and collection approaches and the implementation schedule. Discussions following his presentation focused on the following aspects:

- The mobilization and involvement of the local parks' riparian communities when conducting the study to secure the project sustainability,
- Taking into account the specificities of households when designing the on-field information collecting device during surveys.



3.2.3. Drafted ToRs for the development of the Multi-Risk Early Warning System

The main lines of the terms of reference related to the multi-risk EWS were presented by Mr. AbdoulKarim BELLO, the project monitoring-evaluation expert (rPMU). The presentation provided a detailed overview of the purpose of the mission, the main requested tasks, and expected outputs.



The discussions that followed the presentation focused on the following aspects:

- Taking into account and promoting existing EWSs at the national level to ensure their sustainability and being easily adopted by the receiving structures;
- Ensuring adequate involvement at the preparatory process, of national and regional structures, having already relevant experience and lessons learned;
- Considering some risks such as pollution and epidemiological diseases should be examined, knowing that the MR-EWS to be implemented within the framework of the project must inform climate change-related risks.

3.2.4. Introduction to the project financial and technical reporting

Presented by Mr. Néjib BEN SAOUD, the financial manager (rPMU), who brought to light and explained the planned practices for an effective management and project success. He presented the partners' commitments and regulations, the accounting processing system as well as the reporting milestones and related requirements. He also stated that training will be organized by the OSS to ensure full adoption and understanding by parties of detailed reporting procedures. Training modules are being finalized for this purpose and will be made available before training workshops.



3.2.5. Project implementing progress

The main activities carried out within the framework of this project were presented by Mr. Louis Blanc TRAORE, who focused on the main achievements of the rPMU and the Implementing Entity (IE), since the project approval by the Adaptation Fund in July 2019. He also gave an overview of next regional activities according to the action plan for 2020-2021.

OSS

Etat d'avancement des activités (UGPr)

Activités réalisées par l'Unité régionale d'exécution

- Elaboration du manuel de mise en œuvre du projet (MMOP)
- Appui à l'élaboration des PTBA et PPM de chaque unité d'exécution pour l'année 2020
- Missions de validation des documents du projet (PTBA, PPM, MMOP) dans les pays et échanges sur les aspects organisationnels, institutionnels et CoPil du projet

BENIN BURKINA-FASO NIGER

3.2.6. Conditions for entry into force of the grant agreements

Mr. Nabil HAMADA, the regional project responsible (OSS-IE) underlined through his presentation, the project entry into force requirements and defined conditions according to the grant agreements between OSS and countries. Explanations followed on the steps to first disbursements. An outline has been also provided on the establishment of National Execution Units (nPMUs). The session was ended by presentation of progress made by the beneficiaries regarding the process of the entry into force.



4- DISCUSSIONS AND RECOMMENDATIONS

The final session of the workshop has brought participants to express their views given the provided information from the several presentations made by the Project experts. Accordingly, the following ideas were highlighted and participants recommended some actions for successful and effective implementation of the project:

- The Lessons learned from other projects on how to manage the complex should be considered during the implementation of ADAPT-WAP.
- The implication of other partners and civil society stakeholders should be maintained and closely involved during the project cycle.
- The steering committee should have the chairman chosen on a rotating basis between members from 3 countries of the project with pre-established planning considering mandate duration of twelve months;
- The Steering Committee will be holding a regular face-to-face meeting regularly once a year, but remote meetings can be scheduled as often as required
- The Project Teams should ensure that there are visible impacts of the project through targeted communities during and after the project cycle.
- The financial documents and periodic reporting outlines should be shared with the national partners involved in the project execution;
- Speed-up the grant agreements signatures to allow parties proceeding with the next steps before the fulfillment of the entry into force and first disbursement processes;

- Provide details on the assignments of the national project implementation units' members in particular, the coordinator and the authorizing officer;
- Lead the reflection with all stakeholders to reach the ideal approach to adopt for the conduct of the regional studies and national surveys planned during this first year in the context of health and security crises;
- Improve the terms of reference for the study of the Multi-risk Early Warning System by widening the risks matrix to take into account climate-change-related disease risks

Actions required from the national coordination (nPMUs) and involved Parks management institutions:

- Provide synergy of action between the ADAPT-WAP project operators already involved in the field, such as Civil Society Organization (CSO) and other similar projects in the complex area, and more collaboration with technical and financial partners;
- Support the design office in charge of establishing the baseline situation to facilitate the on-field information and data collection.

5- CONCLUSION

The workshop marked the official launch of the ADAPT-WAP project funded by the Adaptation Fund for the benefit of the three beneficiary countries and brought together all stakeholders despite the current difficult situation. The workshop content provided an overview of the project management aspects and planned activities, the role of the Sahara and Sahel Observatory (OSS) as an Implementing Entity hosting the project Regional Execution Entity and the role of National beneficiary institutions for the Project. Also, the presentations brought further clarification on the project management requirements as well as the preliminary results of the undertaken analysis study.

The discussions were fruitful and the participants were deeply involved through participation, proposals, and recommendations in an unprecedented Pandemic context.

In conclusion, the stakeholders expressed their full support to the project and look forward to having a fruitful project since it shall be addressing very pertinent issues affecting the communities and will allow sustaining the management of the WAP complex.

Annex 1 - Workshop Agenda

TIME	PRESENTATION	SPEAKER
	SESSION 1: OPENING	
10h00-10h10	– Welcoming address of the OSS Executive Secretary	OSS – Countries Partners
10h10-10h15	– Workshop objectives and adoption of the agenda	OSS
10h15-10h35	<ul style="list-style-type: none"> – Speech of the UNESCO representative. – Speech of the WASF representative. – Speech of the GIZ representative: GIC WAP project – Speech of the IUCN representative 	Partners
	SESSION 2: PRIORITY ACTIVITIES	
10h35 -11h00	– Presentation of the ADAPT-WAP Project and the 2020 priority activities	OSS
11h00-11h15	<ul style="list-style-type: none"> – Presentation of the methodology for establishing the project baseline: <ul style="list-style-type: none"> • General methodology and approach • Arrangements and implementation schedule – Discussions 	OSS – Consultant
11h15-11h30	– Discussions on the proposed ToRs for the development of the ADAPT-WAP Early Warning System	rPMU
11h30-11h40	– Brief overview of the technical and financial reports of the project: Global guidelines.	OSS – rPMU
11h40-11h50	<ul style="list-style-type: none"> – Progress of the project execution – Discussions 	OSS – rPMU
11h50-12h00	– Conditions of entry into force of the grant agreements	OSS - IE
	SESSION 3: CLOSURE	
12h00 – 12h30	<ul style="list-style-type: none"> – Wrap up and sharing of the main results of the workshop – Reminder of next steps – Closing remarks 	OSS – Countries Partners

Annex 2 - Attendance List

N°	Name	Position/Institution	E-mail
COUNTRY: Benin			
1	Mr. Ferdinand Claude KIDJO	CENAGREF Chief Executive	claudekidjo@gmail.com
2	Mr. Benoit NOUHOEFLIN	National coordinator of the ADAPT-WAP project	benouhoeflin@yahoo.fr
3	Mr. Abdel Aziz BELLO	Director of the Benin W Park	belaz72000@yahoo.fr
4	Mrs. Rachidath EGOUNLETY	National Project Finance Manager	erachidatou@yahoo.fr
5	Bio Sarako TAMOU	Representative of mayors	tamoubiosarako@gmail.com
6	Mr. Euloge LIMA	Representative Focal point of the Adaptation Fund	limeloge@gmail.com
7	Mr. Razack ADJIBI	Head of Conservation and Promotion of Natural Resources at the DCPNR	razadjibi@yahoo.fr
8	Mr. Jean-Marc FROMENT	APN-Benin representative	jeanmarcf@africanparks.org
9	Mr. Hugues AKPONA	APN Institutional Fund Manager	huguesa@africanparks.org
10	Mr. Jean Yves KOUMPOGUE	Director of the Pendjari National Park	jeanyvesk@africanparks.org
COUNTRY: Burkina-Faso			
1	Mr. Lamoussa DIAO HEBIE	Chief Executive of Water and Forests (CEWF)	lamoussa_dh@hotmail.fr
2	Mr. Benoit DOAMBA	National coordinator of the ADAPT-WAP project	benoitdoamba@yahoo.fr
3	Mr. Prosper COMPARE	OFINAP Technical Coordinator	compaoreprospert@yahoo.fr
4	Mr. Boubacar ILBOUDO	DGSSS	boubakr79@yahoo.fr
5	Mr. Kimsé OUEDRAOGO	General Secretariat of the Ministry of the Environment	kimseouedraogo1@yahoo.fr
6	Mr. Abdoulaye ZERBO	Administrative and Financial Manager	zerboabdallah@yahoo.fr
7	Mrs. Salimata SY/BARRY	Focal Point of the Adaptation Fund	barryssa@yahoo.fr
8	Mr. Boukaré OUEDRAOGO	Curator of the Arly National Park	boukareouedraogo86@yahoo.fr
9	Mr. Emmanuel SAWADOGO	Curator of the W Park	emmanuelawadogo17@yahoo.fr
10	Mr. Daouda TRAORE	OFINAP Technical Director	traore_daou@yahoo.fr
11	Mr. Nongma YAMEOGO	OFINAP Accountant	
12	Mr Mohamed OUEDRAOGO	Consultant	sudconseil@fasonet.bf
COUNTRY: Niger			
1	Mr. Moussa IRO MORPHI	Chief Executive of Water and Forests, Commanding Officer	morphimoussa@yahoo.fr
2	Dr. Hassane DJIBRILLA CISSE	Chief Executive of the National Office of Evaluations	cisseronhassane@yahoo.fr
3	Mr. Samaila SAHAILOU	Director of Wildlife, Hunting, Parks and Reserves	sahailou2@yahoo.fr
4	Mr. Abdoulaye MAIZAMA	Head of the National Centre for Environmental Ecological Monitoring	maizama@yahoo.fr
5	Mr. Amadou NOUFOU	Head of Financial Resources and MEUH/SD Equipment	amadouoga@yahoo.fr
6	Mr. Ibrahim MADOUGOU	National Coordinator of the ADAPT WAP Project	ibrahimadougou616@yahoo.fr
7	Mr. Kamayé MAAZOU	Focal Point of the Adaptation Fund	kamayemaazou@yahoo.fr
8	Mr. Moussa DJIBEY	Curator of the W Regional Park of Niger	djikader@yahoo.fr
9	Mr. Abdou Ibrahim MALICK	Head of Fisheries and Aquaculture (HFA)	ibrahimmalikibrahim@yahoo.com
10	Mr. Adamou Djibo TRAORE	Head of Nature and Equipment Protection (HNE/P)	traore_ad61@yahoo.fr
11	Mr. Kader MOHAMED	Studies and Programming Department of the Ministry of the Environment, Urban Health and SD	kader_mohamedfr@yahoo.fr
12	Mr. Yacouba SEYBOU	Department of Sustainable Land Management	yacoubseybou@yahoo.fr
13	Mr. Laouali KARAMI	NGO HPFP (Homeland planning and Forest Production),	lawali36@gmail.com

N°	Name	Position/Institution	E-mail
14	Mr. Moussa YOUNOUSSA	Representative of the Association of Mayors of riparian townships, S/C	altineabdoulaye68@yahoo.fr
TECHNICAL AND FINANCIAL PARTNERS AND OTHER INSTITUTIONS			
1	Mr. Salifou ZOU MARI	Representative of GIZ	salifou.zoumari@giz.de
2	Mr. Alfred Koffi ALLOGNINO UWA	Executive Director of the West African Savannah Foundation (WASF)	contact@fsoactf.org
REGIONAL IMPLEMENTATION ENTITY (IE/OSS)			
1	Mr. Khatim KHERRAZ	Executive Secretary of the Sahara and Sahel Observatory (OSS)	khatim.kherraz@oss.org.tn
2	Mr. Nabil BEN KHATRA	Environment Program Coordinator	nabil.benkhatra@oss.org.tn
3	Mr. Nabil HAMADA	Project Implementation Unit (IE) Coordinator	nabil.hamada@oss.org.tn
4	Mr. Adel REKIK	OSS finance manager	adel.rekik@oss.org.tn
5	Mrs. Lilia BENZID	Gender and Communication Manager	Lilia.benzid@oss.org.tn
6	Mr. Aziz BELHAMRA	Project Assistant	Aziz.belhamra@oss.org.tn
REGIONAL PROJECT EXECUTION UNIT (RPMU)			
1	Mr. Louis Blanc TRAORE	Regional project coordinator	louisblanc.traore@oss.org.tn
2	Mr. Nejib BEN SAOUD	Project finance manager	nbsectn@yahoo.fr
3	Mr. Karim BELLO	Project monitoring-evaluation expert	bello.abdoulkarim@oss.org.tn
4	Mr. Youssouf Amadou	Project Assistant	yousouf.amadou@oss.org.tn

Communication & Visibility:

■ Dedicated Webpage for the ADAPT-WAP Project:



OBSERVATOIRE DU SAHARA ET DU SAHEL
SAHARA AND SAHEL OBSERVATORY

Recherche Membres Français ▾

Accueil A propos - Notre expertise - **Nos projets** - Travailler avec nous - Actualités - Ressources -

INTÉGRATION DES MESURES D'ADAPTATION AU CHANGEMENT CLIMATIQUE DANS LA GESTION CONCERTÉE DU COMPLEXE TRANSFRONTALIER WAP | ADAPT-WAP

Date d'approbation
Mars 2019

Durée du projet
4 ans (2019 – 2023)

Partenaire financier
Fonds d'adaptation

Partenaires financiers et techniques

- Le Centre National de Gestion des Réserves de Faune (CENAGREF) du Bénin
- L'Office National des Aires protégées (OFINAP) et la Direction Générale des Eaux et Forêts (DGEF) du Burkina Faso
- La Direction Générale des Eaux et Forêts (DGEF) du Niger
- Le Centre National de Suivi Environnemental et Ecologique (CNSEE) du Niger

Pays concernés
Bénin, Burkina Faso, Niger

Bénéficiaires principaux du projet

- Les populations riveraines et autorités locales au niveau des parcs W, Arly et Pendjari
- Les services techniques des départements ministériels chargés de l'Environnement des trois pays
- Les organisations professionnelles locales
- Les organisations professionnelles de femmes au niveau local
- Les ONGs locales
- La Société civile locale

Objectifs
Renforcer la résilience des écosystèmes et améliorer les conditions de vie des populations du complexe WAP face au changement climatique à travers l'établissement d'un Système d'Alerte précoce multirisques relatifs aux sécheresses, inondations et incendies, et la mise en œuvre de mesures concrètes d'adaptation pour gérer ces urgences.

Résultats attendus

- La dimension climatique et ses risques sont intégrés dans le schéma directeur d'aménagement ainsi que dans les plans de gestion du complexe;
- Le système d'alerte précoce multirisque est utilisé par les bénéficiaires pour gérer les urgences (Système constitué d'une série de mécanismes de surveillance qui collecte des informations sur les aléas climatiques afin d'alerter à l'avance les populations et de déclencher en temps des interventions coordonnées (cas de sécheresse, d'inondation et d'incendie)
- La résilience des populations et des écosystèmes est améliorée grâce à des mesures concrètes d'adaptation;
- Les conditions de vie des populations sont diversifiées et améliorées;
- Les acteurs concernés sont mobilisés et sensibilisés à travers une communication adaptée et un renforcement de capacités.

Statut du projet
Le projet a été approuvé par le Fonds d'adaptation, pour financement.

Rôle de FOSS

- Superviser la mise en œuvre du projet en tant qu'Entité Régionale de mise en œuvre du Fonds d'adaptation, recevoir les fonds et les canaliser vers les pays bénéficiaires à travers l'Unité Régionale d'exécution du projet,
- Héberger l'Unité Régionale d'Exécution chargée de la coordination des activités du projet

Principales réalisations

- Premiers contacts avec les différentes institutions et structures nationales concernées des trois pays, (procédure de vérification diligente et passage en revue des conditions d'entrée en vigueur du projet (OSS)
- Organisation d'une mission d'information et de sensibilisation des parties prenantes sur les modalités d'exécution des activités et de coordination du projet (Unité Régionale d'Exécution du projet)
- Organisation de l'atelier de lancement par téléconférence pour présenter et valider les activités prioritaires à mener au niveau régional, Ile 21 avril 2020 (en raison de la crise COVID).

Notre mission Politiques OSS Devenir membre Opportunités Événement Publications Contactez nous

Observatoire du Sahara et du Sahel - Sahara and Sahel Observatory, Tunis, Tunisia © OSS 2018

- **News Update on OSS website:**

ADAPTATION AU CHANGEMENT CLIMATIQUE DU COMPLEXE TRANSFRONTALIER W-ARLY-PENDJARI : ATELIER VIRTUEL DE LANCEMENT DU PROJET ADAPT-WAP, 21 AVRIL 2020

21/04/2020

Démarrage ce matin, de l'atelier virtuel de lancement du projet d'« Intégration des mesures d'adaptation au changement climatique dans la gestion concertée du complexe transfrontalier W-Arly-Pendjari (WAP) » - ADAPT-WAP, partagé par le Bénin, le Burkina Faso et le Niger.

Cet atelier régional a pour principal objectif de consolider la compréhension et l'appropriation du projet par les différents intervenants.

Les principaux résultats attendus de cet atelier, auquel participent une trentaine de personnes représentant les 3 pays bénéficiaires et la société civile, sont de présenter et valider les activités prioritaires à mener au niveau régional, la méthodologie d'établissement de la situation de référence du projet, ainsi que les modèles de reporting (rapports technique et financier).

L'atelier de lancement sera suivi de la 1ere réunion virtuelle du comité de pilotage du projet, prévue le 22 avril 2020.

Depuis le début de la crise COVID, l'OSS a adapté son mode de fonctionnement et poursuit, en ligne (sur sa plateforme de visio-conférence relayée en direct sur sa page Facebook), la mise en œuvre des activités, ateliers et formations initialement prévus, grâce à la mobilisation de ses équipes et de ses partenaires.

Le Projet ADAPT WAP, financé par le Fonds d'adaptation sur une période de 4 années (2019 – 2023), a pour objectif de renforcer la résilience des écosystèmes et améliorer les conditions de vie des populations du complexe WAP face au changement climatique à travers l'établissement d'un Système d'Alerte précoce multirisques relatifs aux sécheresses, inondations et incendies, et la mise en œuvre de mesures concrètes d'adaptation pour gérer ces urgences.

- **Link to Facebook Live Video:**

<https://www.facebook.com/OSSCommunity/videos/1554398841394566/>

- **News Update on OSS Facebook Page:**